

UNIT, DIRECT SUPPORT, AND GENERAL SUPPORT MAINTENANCE
REPAIR PARTS AND SPECIAL TOOLS LIST
TRUCK, 5-TON, 6X6, M809 SERIES TRUCKS (DIESEL)

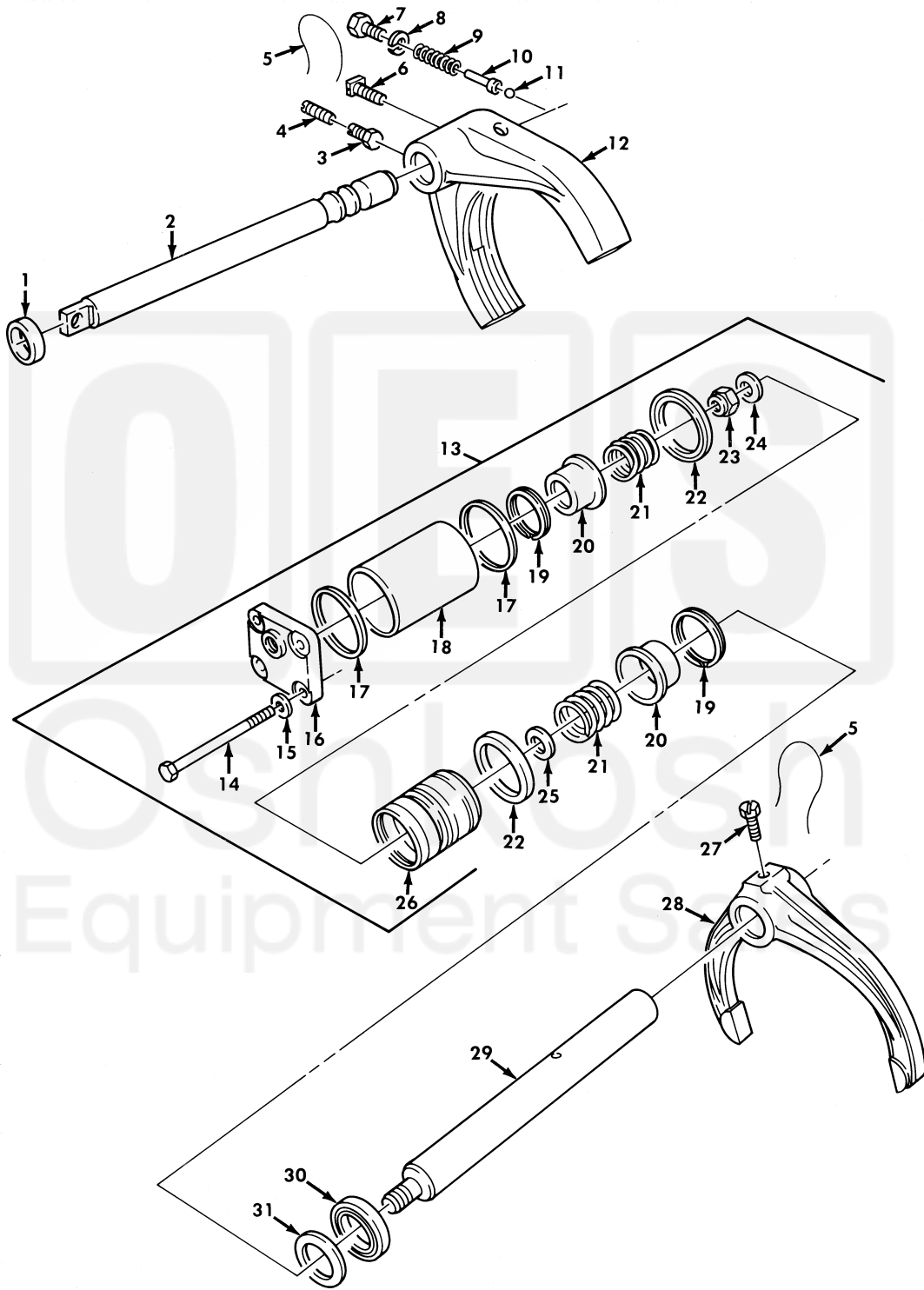


Figure 146. Transfer Shift Mechanisms.

| (1) ITEM NO | (2) SMR CODE | (3) NSN | (4) CAGEC | (5) PART NUMBER | (6) DESCRIPTION AND USABLE ON CODE (UOC) | (7) QTY |
|--|--------------------|------------------|--------------|-----------------------|--|------------|
| GROUP 0803 GEAR SHIFT,VACUUM BOOSTER AND CONTROLS | | | | | | |
| FIG. 146 TRANSFER SHIFT MECHANISMS | | | | | | |
| 1 | PAHZZ | 5330-00-571-7052 | 19207 | 10938287 | SEAL,PLAIN ENCASED..... | 1 |
| 2 | PAHZZ | 3040-00-591-5827 | 19207 | 7998650 | SHAFT, SHOULDERED..... | 1 |
| 3 | PAHZZ | 5306-00-470-2110 | 19207 | 7375283 | BOLT,MACHINE..... | 1 |
| 4 | PAHZZ | 5305-00-725-0164 | 96906 | MS51963-139 | SETSCREW..... | 1 |
| 5 | MHHZZ | | 96906 | MS20995F47-AR | WIRE,NONELECTRICAL MAKE FROM WIRE,P/N MS20995F47,LENGTH AS REQUIRED..... | 1 |
| 6 | PAHZZ | 5305-00-695-7174 | 19207 | 7521390 | SETSCREW..... | 1 |
| 7 | PAHZZ | 5306-00-734-6774 | 19207 | 7346774 | BOLT,MACHINE..... | 1 |
| 8 | PAHZZ | 5310-00-194-1483 | 96906 | MS35333-44 | WASHER, LOCK..... | 1 |
| 9 | PAHZZ | 5360-00-692-6089 | 19207 | 7521387 | SPRING,HELICAL,COMP..... | 1 |
| 10 | PAHZZ | 2520-00-514-3782 | 19207 | 5143782 | PLUNGER, SHIFTER SHA..... | 1 |
| 11 | PAHZZ | 3110-00-948-9796 | 96906 | MS19061-20013 | BALL,BEARING..... | 1 |
| 12 | PAHZZ | 2520-00-953-9908 | 19207 | 7748586 | SHIFTER FORK,VEHICU..... | 1 |
| 13 | PAFFH | 3040-00-734-6756 | 19207 | 7346756 | CYLINDER ASY TRANSF..... | 1 |
| 14 | PAFZZ | 5305-00-071-2517 | 80204 | B1821BH025C350N | .SCREW,CAP,HEXAGON H..... | 4 |
| 15 | PAFZZ | 5310-00-145-2085 | 19207 | 8327009 | .WASHER,KEY..... | 4 |
| 16 | PAFZZ | 5340-00-176-8384 | 19207 | 8758298 | .COVER,ACCESS..... | 1 |
| 17 | PAFZZ | 5365-00-832-7774 | 19207 | 10913209 | .SPACER,RING..... | 2 |
| 18 | XAFZZ | | 19207 | 8758292 | .CYLINDER..... | 1 |
| 19 | PAFZZ | 5325-00-663-1249 | 80756 | RR175C | .RING,RETAINING..... | 2 |
| 20 | XAFZZ | | 19207 | 8758291 | .RETAINER..... | 2 |
| 21 | PAFZZ | 5360-01-167-4502 | 19207 | 8758293 | .SPRING,HELICAL,COMP..... | 2 |
| 22 | PAFZZ | 5330-00-832-8235 | 19207 | 8758294 | .SEAL,TRANSFER ENGAG..... | 2 |
| 23 | PAFZZ | 5310-00-088-0552 | 96906 | MS21044N7 | .NUT,SELF-LOCKING,HE..... | 1 |
| 24 | XAFZZ | | 19207 | 11621033 | .WASHER..... | 1 |
| 25 | PAFZZ | 5310-00-527-4222 | 19207 | 8758299 | .WASHER,FLAT..... | 1 |
| 26 | XAFZZ | | 19207 | 8758295 | .PISTON..... | 1 |
| 27 | PAHZZ | 5305-00-752-1391 | 19207 | 7521391 | SETSCREW..... | 1 |
| 28 | PAHZZ | 2520-00-737-5289 | 19207 | 7375289 | SHIFTER FORK,VEHICU..... | 1 |
| 29 | PAHZZ | 3040-00-734-6803 | 19207 | 7346803 | SHAFT..... | 1 |
| 30 | PAFZZ | 5330-00-737-5282 | 19207 | 7375282 | PACKING,PREFORMED..... | 1 |
| 31 | PAFZZ | 5310-00-188-4195 | 76894 | 1263 | WASHER,FLAT..... | 1 |

END OF FIGURE